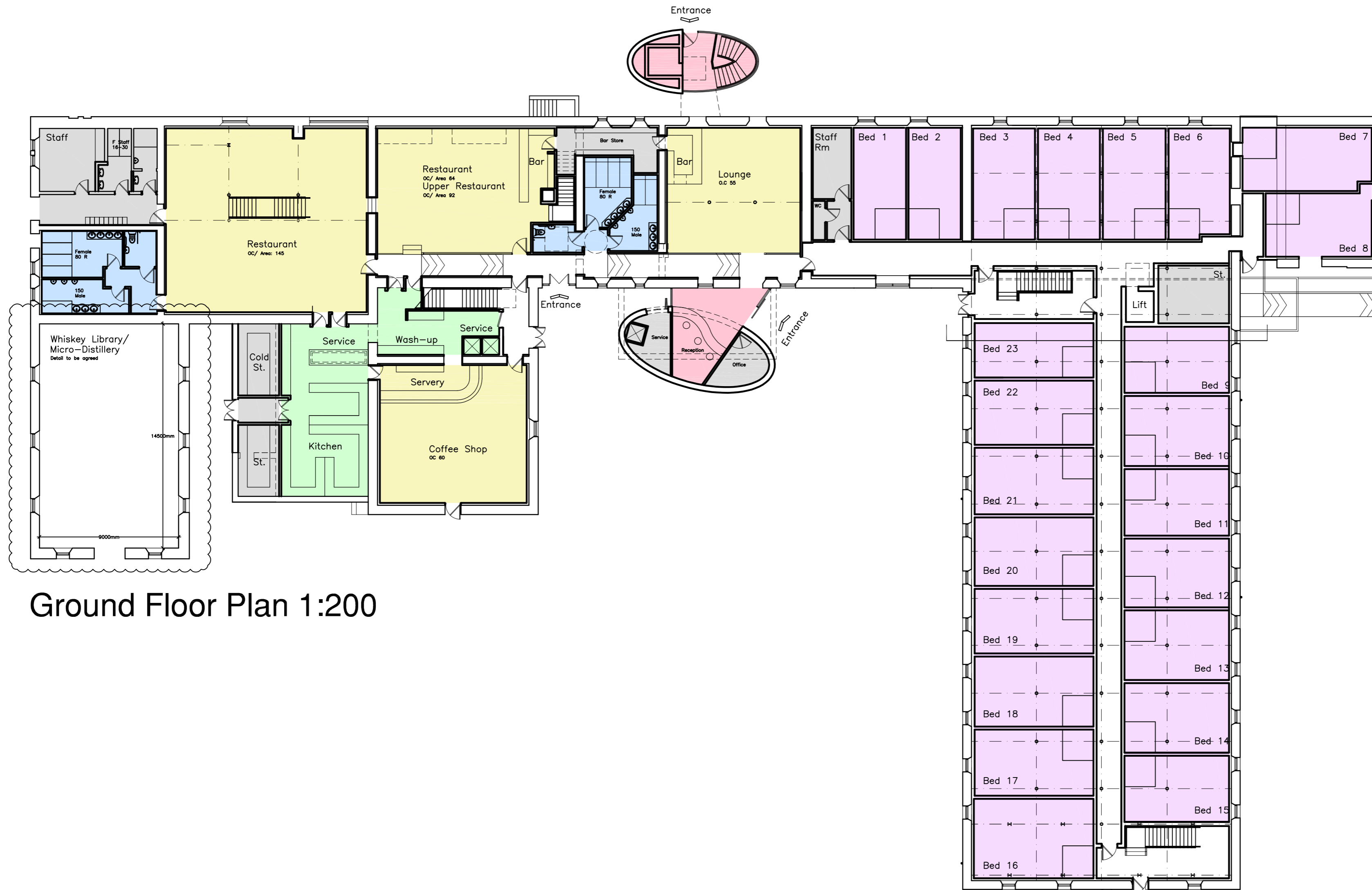


This drawing should be read in conjunction with the NBS, and All Architects, Structural Engineer, Mechanical engineer and specialist Equipment Suppliers drawings
 All drawing numbers quoted on drawing are to be read as current revisions, refer to drawing register for associated drawing nos. & revisions
 Refer to details for construction information
 Architect should be notified of any indiscrepancies prior to construction
 These drawings should not be scaled



Ground Floor Plan 1:200

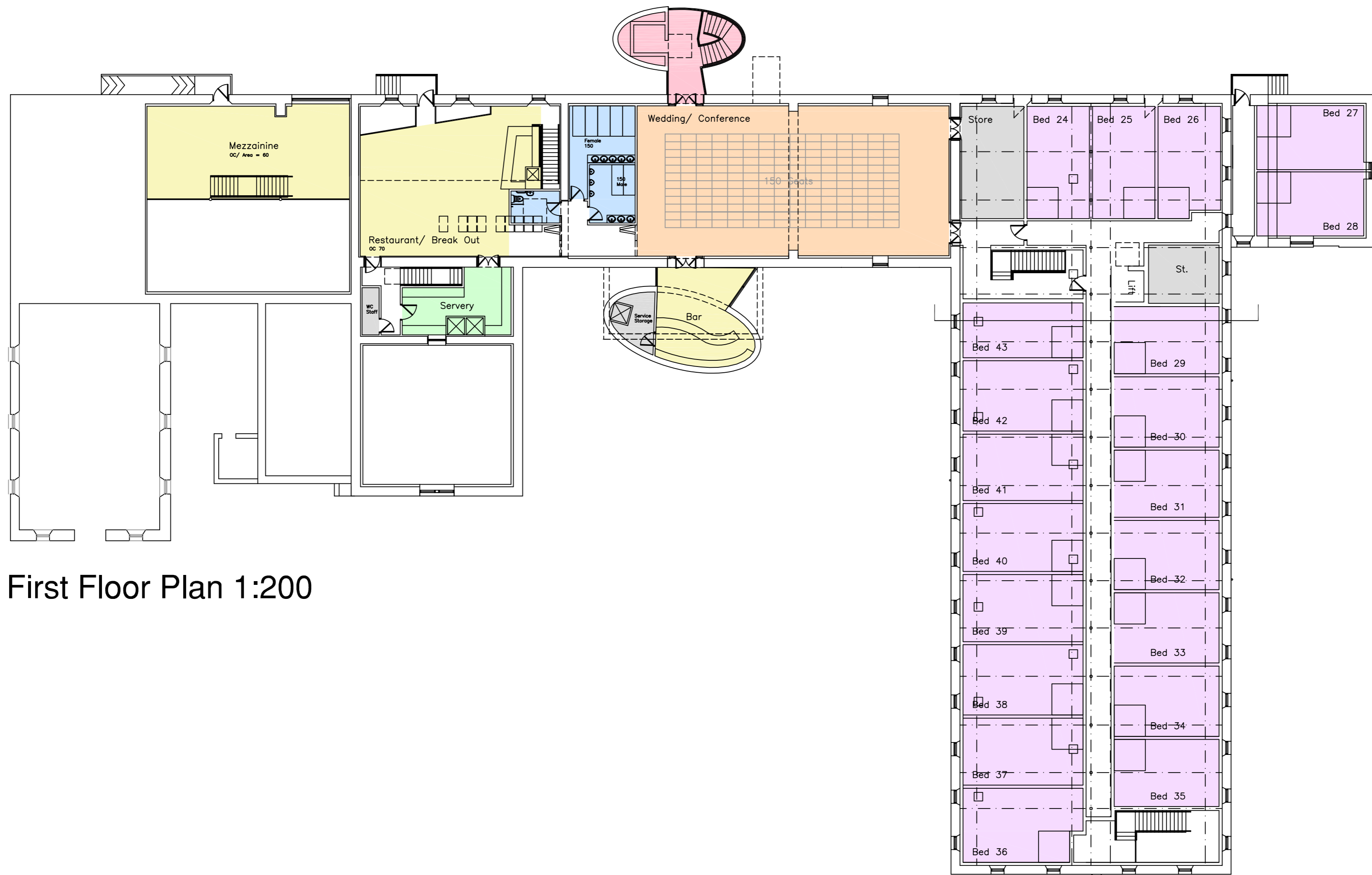
23 Bedrooms

Client D & M Winchester
Project Proposed Hotel Coleburn Distillery, Elgin

COLIN ARMSTRONG ASSOCIATES
 Chartered Architects

Drawing Title Ground Floor Plan		
Scale 1:200	Date Nov 2009	CAD File No. 0945/Curr/100 (Tab 100)
Job Number 0945	Drwg. No. 100	Revision

This drawing should be read in conjunction with the NBS, and All Architects, Structural Engineer, Mechanical engineer and specialist Equipment Suppliers drawings
 All drawing numbers quoted on drawing are to be read as current revisions, refer to drawing register for associated drawing nos. & revisions
 Refer to details for construction information
 Architect should be notified of any indiscrepancies prior to construction
 These drawings should not be scaled



First Floor Plan 1:200

20 Bedrooms

Client D & M Winchester
Project Proposed Hotel Coleburn Distillery, Elgin

COLIN ARMSTRONG ASSOCIATES
 Chartered Architects

Drawing Title Ground Floor Plan		
Scale 1:200	Date Nov 2009	CAD File No. 0945/Curr/100 (Tab 101)
Job Number 0945	Drwg. No. 101	Revision